



***CEISIADAU YR ARGYMHELLIR EU  
BOD YN CAEL EU CYMERADWYO***

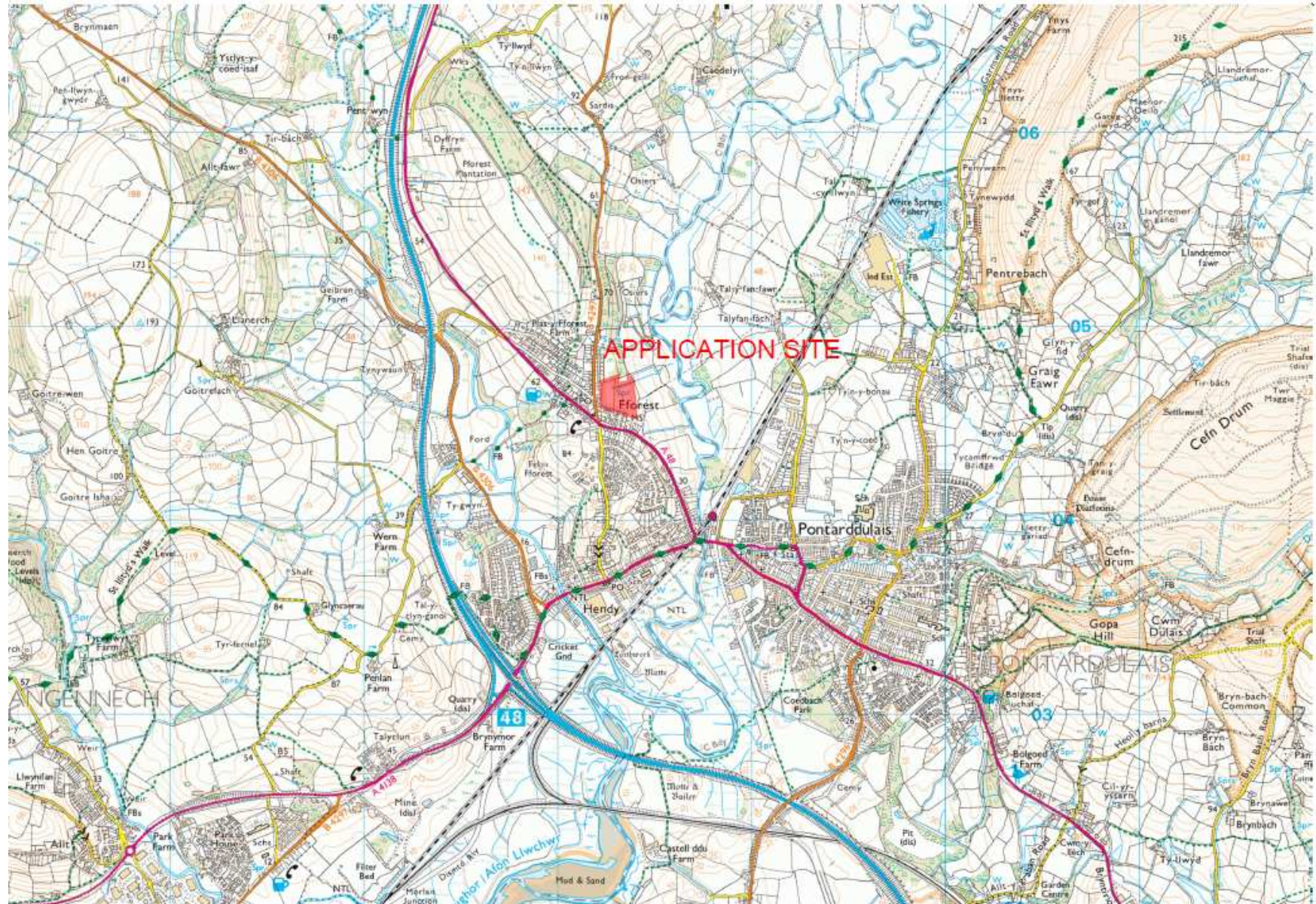
**APPLICATIONS RECOMMENDED  
FOR APPROVAL**



# S/35215



# S/35215

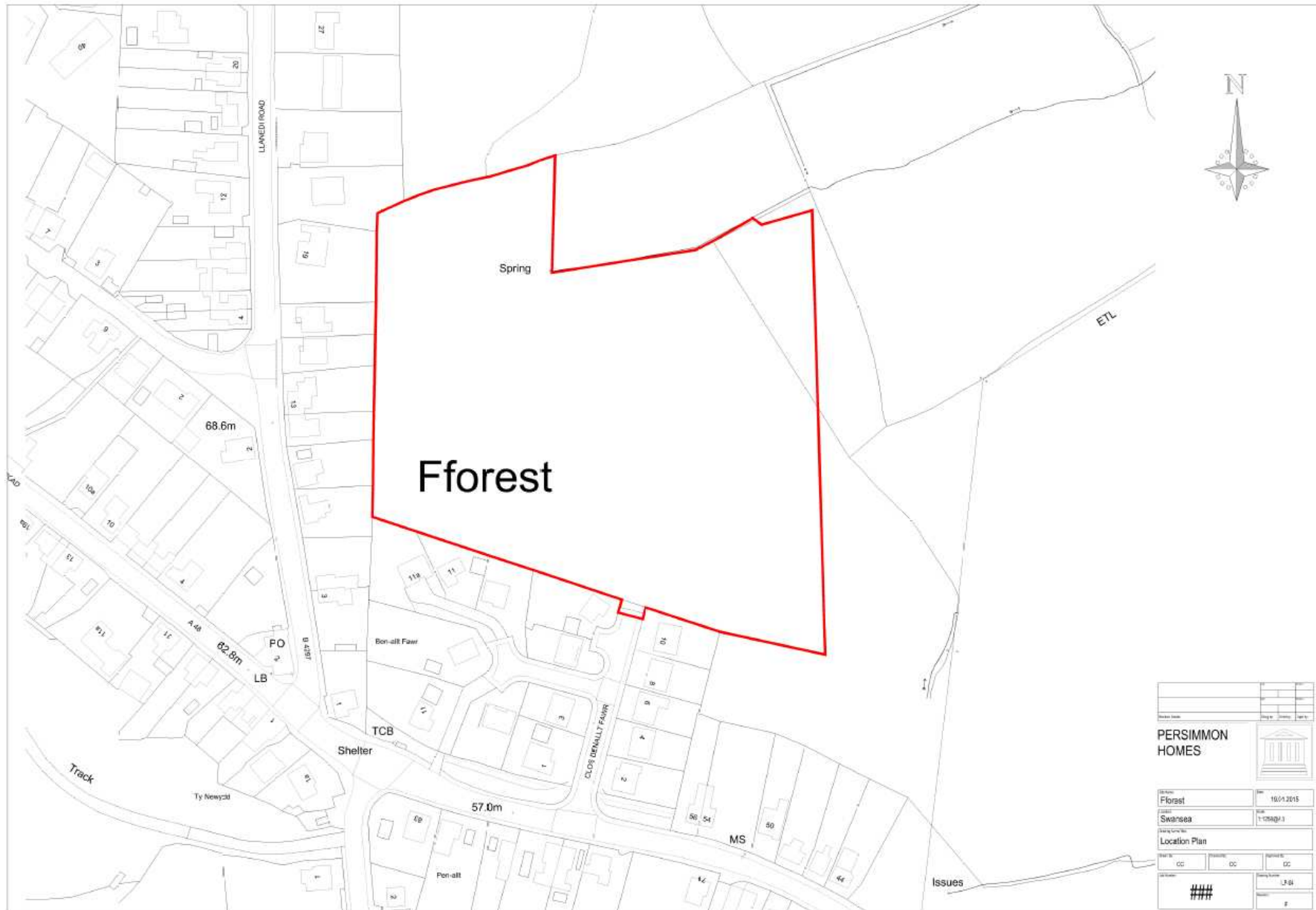




**S/35215**



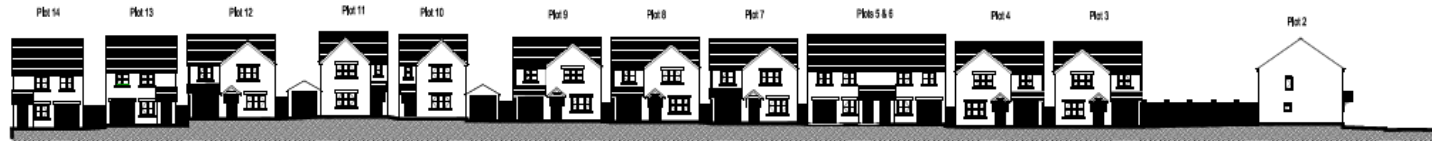
# S/35215







# S/35215



SECTION 1-1



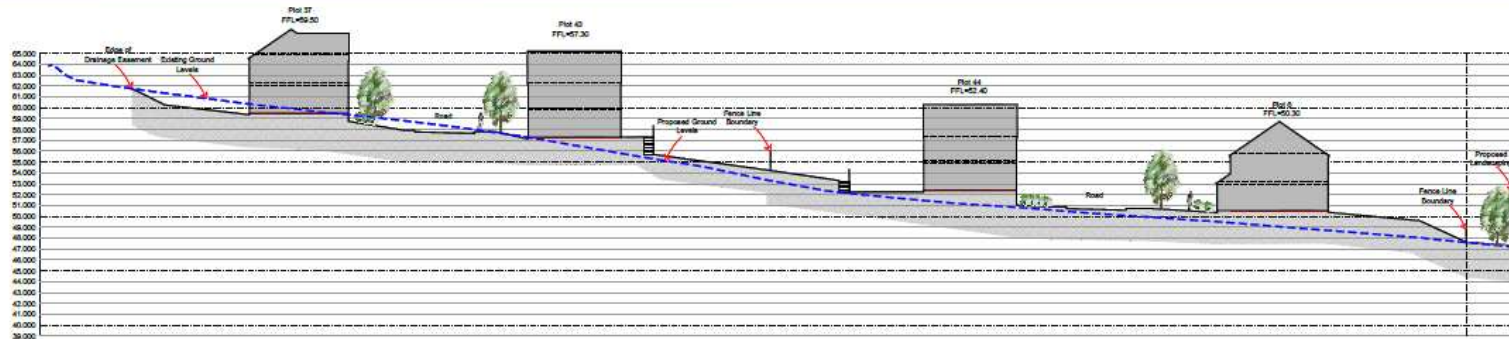
SECTION 2-2



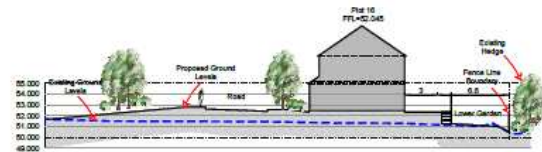
SITE NAME: FFOREST  
DRAWING TITLE: STREET ELEVATIONS  
DRAWING NO: SE-01  
SCALE: 1:250@A1, 1:500@A3  
REV: #  
DATE: 21.02.17

FFOREST

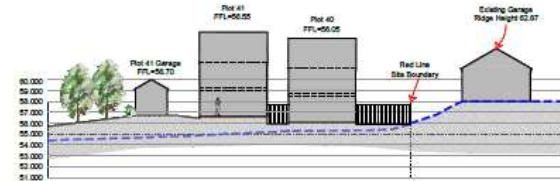
# S/35215



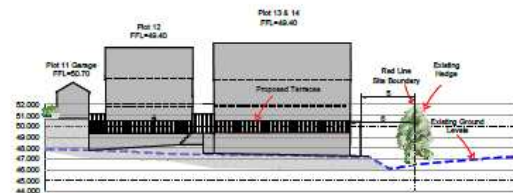
SECTION 4-4



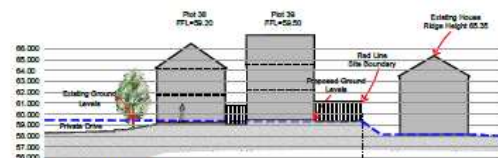
SECTION 5-5



SECTION 8-8



SECTION 6-6



SECTION 7-7



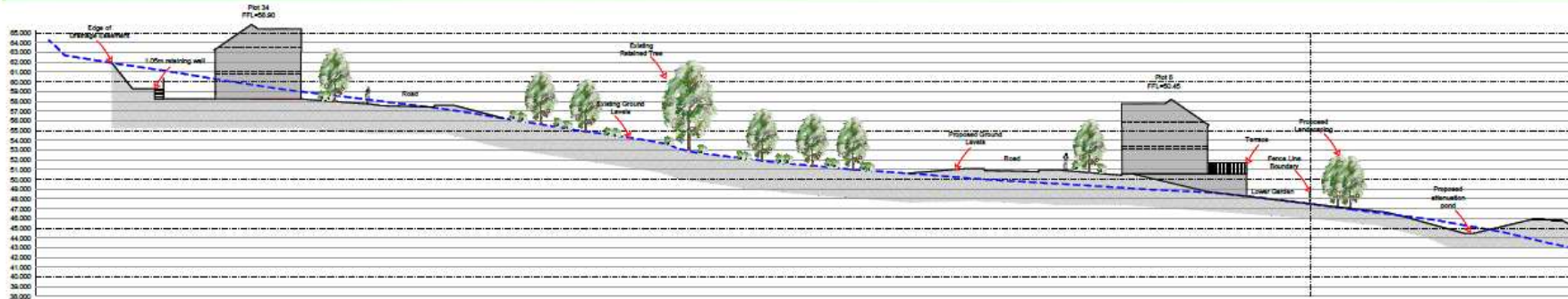
REV C - SECTIONS 7-7 & 8-8 AMENDED  
30/11/17 CC  
REV A - SECTIONS AMENDED IN ACCORDANCE WITH  
LATEST ENGINEERING LAYOUT 05/10/17 CC



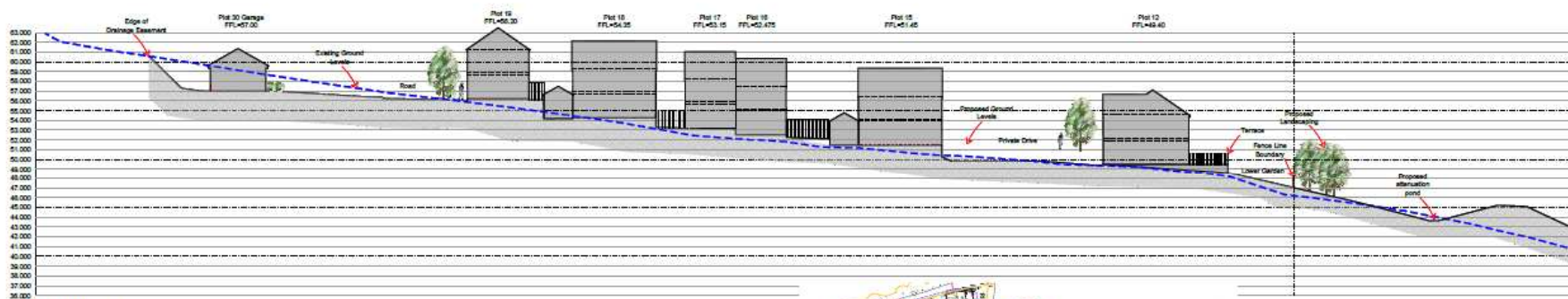
SITE NAME: FFOREST  
DRAWING TITLE: SITE CROSS SECTION  
DRAWING NO: SCS-02  
SCALE: 1:100@A1, 1:200@A3  
REV: B  
DATE: 17.08.2017



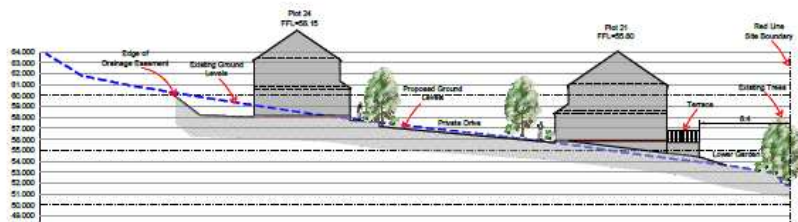
# S/35215



SECTION 3-3



SECTION 2-2



SECTION 1-1



REV C - SECTIONS 1-7 & 14 AMENDED  
 COMMENTS 15/11/17 CC  
 REV B - SECTIONS AMENDED TO PLANNERS  
 COMMENTS 15/11/17 CC  
 REV A - SECTIONS AMENDED IN ACCORDANCE WITH  
 LATEST ENGINEERING LAYOUT 05/11/17 CC

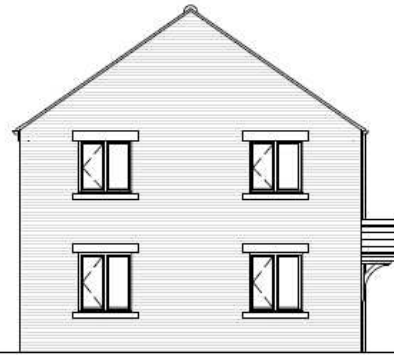


SITE NAME: FFOREST  
 DRAWING TITLE: SITE CROSS SECTION  
 DRAWING NO: SCS-01  
 SCALE: 1:100@A1, 1:200@A3  
 REV: B  
 DATE: 17.08.2017

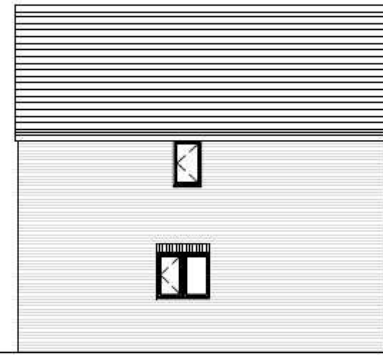
# S/35215



Front Elevation



Side Elevation

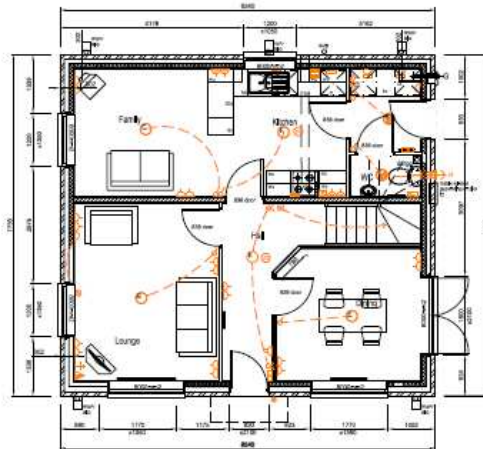


Rear Elevation

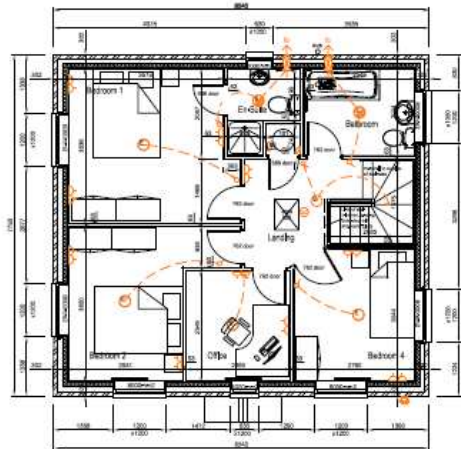


Side Elevation

113m<sup>2</sup> 4 bed house requires EQUIVALENT 53'000mm<sup>2</sup> trickle ventilation. All vent rates shown are EQUIVALENT rates - total 76'000mm<sup>2</sup>



Ground Floor Plan.

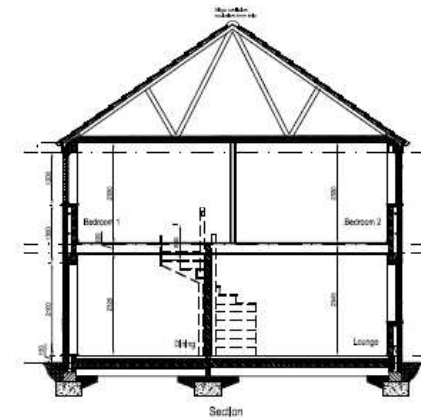


First Floor Plan.

- Electrical Key**
- 1. 13Amp socket outlet
  - 2. 13Amp socket outlet with switch
  - 3. 13Amp socket outlet with switch and RCD
  - 4. 13Amp socket outlet with switch and RCD
  - 5. 13Amp socket outlet with switch and RCD
  - 6. 13Amp socket outlet with switch and RCD
  - 7. 13Amp socket outlet with switch and RCD
  - 8. 13Amp socket outlet with switch and RCD
  - 9. 13Amp socket outlet with switch and RCD
  - 10. 13Amp socket outlet with switch and RCD
  - 11. 13Amp socket outlet with switch and RCD
  - 12. 13Amp socket outlet with switch and RCD
  - 13. 13Amp socket outlet with switch and RCD
  - 14. 13Amp socket outlet with switch and RCD
  - 15. 13Amp socket outlet with switch and RCD
  - 16. 13Amp socket outlet with switch and RCD
  - 17. 13Amp socket outlet with switch and RCD
  - 18. 13Amp socket outlet with switch and RCD
  - 19. 13Amp socket outlet with switch and RCD
  - 20. 13Amp socket outlet with switch and RCD
  - 21. 13Amp socket outlet with switch and RCD
  - 22. 13Amp socket outlet with switch and RCD
  - 23. 13Amp socket outlet with switch and RCD
  - 24. 13Amp socket outlet with switch and RCD
  - 25. 13Amp socket outlet with switch and RCD
  - 26. 13Amp socket outlet with switch and RCD
  - 27. 13Amp socket outlet with switch and RCD
  - 28. 13Amp socket outlet with switch and RCD
  - 29. 13Amp socket outlet with switch and RCD
  - 30. 13Amp socket outlet with switch and RCD
  - 31. 13Amp socket outlet with switch and RCD
  - 32. 13Amp socket outlet with switch and RCD
  - 33. 13Amp socket outlet with switch and RCD
  - 34. 13Amp socket outlet with switch and RCD
  - 35. 13Amp socket outlet with switch and RCD
  - 36. 13Amp socket outlet with switch and RCD
  - 37. 13Amp socket outlet with switch and RCD
  - 38. 13Amp socket outlet with switch and RCD
  - 39. 13Amp socket outlet with switch and RCD
  - 40. 13Amp socket outlet with switch and RCD
  - 41. 13Amp socket outlet with switch and RCD
  - 42. 13Amp socket outlet with switch and RCD
  - 43. 13Amp socket outlet with switch and RCD
  - 44. 13Amp socket outlet with switch and RCD
  - 45. 13Amp socket outlet with switch and RCD
  - 46. 13Amp socket outlet with switch and RCD
  - 47. 13Amp socket outlet with switch and RCD
  - 48. 13Amp socket outlet with switch and RCD
  - 49. 13Amp socket outlet with switch and RCD
  - 50. 13Amp socket outlet with switch and RCD
  - 51. 13Amp socket outlet with switch and RCD
  - 52. 13Amp socket outlet with switch and RCD
  - 53. 13Amp socket outlet with switch and RCD
  - 54. 13Amp socket outlet with switch and RCD
  - 55. 13Amp socket outlet with switch and RCD
  - 56. 13Amp socket outlet with switch and RCD
  - 57. 13Amp socket outlet with switch and RCD
  - 58. 13Amp socket outlet with switch and RCD
  - 59. 13Amp socket outlet with switch and RCD
  - 60. 13Amp socket outlet with switch and RCD
  - 61. 13Amp socket outlet with switch and RCD
  - 62. 13Amp socket outlet with switch and RCD
  - 63. 13Amp socket outlet with switch and RCD
  - 64. 13Amp socket outlet with switch and RCD
  - 65. 13Amp socket outlet with switch and RCD
  - 66. 13Amp socket outlet with switch and RCD
  - 67. 13Amp socket outlet with switch and RCD
  - 68. 13Amp socket outlet with switch and RCD
  - 69. 13Amp socket outlet with switch and RCD
  - 70. 13Amp socket outlet with switch and RCD
  - 71. 13Amp socket outlet with switch and RCD
  - 72. 13Amp socket outlet with switch and RCD
  - 73. 13Amp socket outlet with switch and RCD
  - 74. 13Amp socket outlet with switch and RCD
  - 75. 13Amp socket outlet with switch and RCD
  - 76. 13Amp socket outlet with switch and RCD
  - 77. 13Amp socket outlet with switch and RCD
  - 78. 13Amp socket outlet with switch and RCD
  - 79. 13Amp socket outlet with switch and RCD
  - 80. 13Amp socket outlet with switch and RCD
  - 81. 13Amp socket outlet with switch and RCD
  - 82. 13Amp socket outlet with switch and RCD
  - 83. 13Amp socket outlet with switch and RCD
  - 84. 13Amp socket outlet with switch and RCD
  - 85. 13Amp socket outlet with switch and RCD
  - 86. 13Amp socket outlet with switch and RCD
  - 87. 13Amp socket outlet with switch and RCD
  - 88. 13Amp socket outlet with switch and RCD
  - 89. 13Amp socket outlet with switch and RCD
  - 90. 13Amp socket outlet with switch and RCD
  - 91. 13Amp socket outlet with switch and RCD
  - 92. 13Amp socket outlet with switch and RCD
  - 93. 13Amp socket outlet with switch and RCD
  - 94. 13Amp socket outlet with switch and RCD
  - 95. 13Amp socket outlet with switch and RCD
  - 96. 13Amp socket outlet with switch and RCD
  - 97. 13Amp socket outlet with switch and RCD
  - 98. 13Amp socket outlet with switch and RCD
  - 99. 13Amp socket outlet with switch and RCD
  - 100. 13Amp socket outlet with switch and RCD
- Note - for kitchen refer also to kitchen suppliers drawing

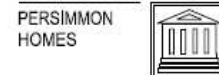
**Spaced Timber Frame**  
 The timber frame is constructed using spaced timber frame technology. The frame is made up of vertical studs and horizontal joists, which are spaced at regular intervals. This allows for a lightweight and flexible structure that can be adapted to various floor plans and roof types. The timber frame is finished with a protective coating to prevent rot and insect damage.

**General - All Dwellings**  
 The dwellings are constructed using high-quality materials and workmanship. The walls are finished with a decorative plaster or render, and the floors are finished with a durable carpet or laminate. The roofs are pitched and finished with a weather-resistant material. The dwellings are designed to be energy-efficient and comfortable to live in.



Section

Rev A - CD detector added 25/03/2015  
 Rev B - Rear bedroom window updated 22/04/2015  
 Rev C - other amendments as per rev B 25/03/2015  
 Rev D - added to plan sheet amended



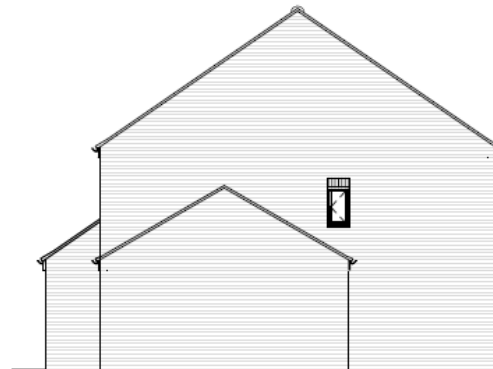
1222 sqft	
Chedworth Special	171215
CDC-WD06, SP	50@A1, 100@A2
Plans & Elevations ( Village)	
	Rev D



# S/35215



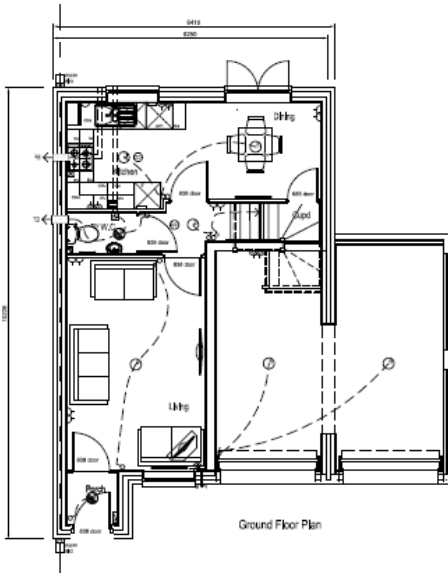
Front Elevation



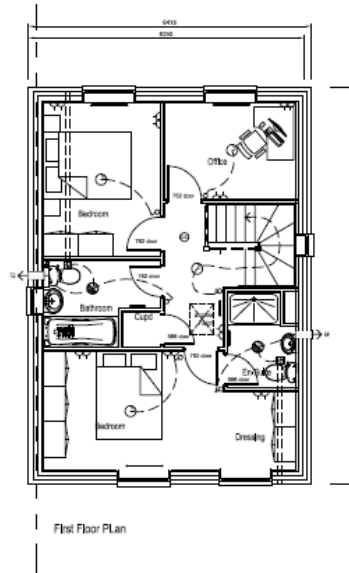
Side Elevation



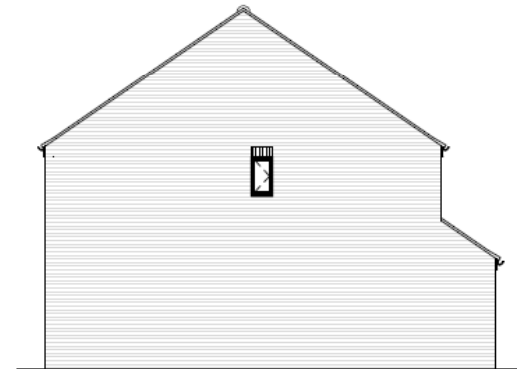
Rear Elevation



Ground Floor Plan



First Floor Plan



Side Elevation

Rev A - 8th floor double window moved to bed 1st to 02/12/19/05  
 Rev B - 1st floor window, porch floor removed for 1st 02/11/19/05  
 Rev C - Bed 1 window corrected on plan to align LL 10/11/19/05

PERSIMMON  
 HOMES

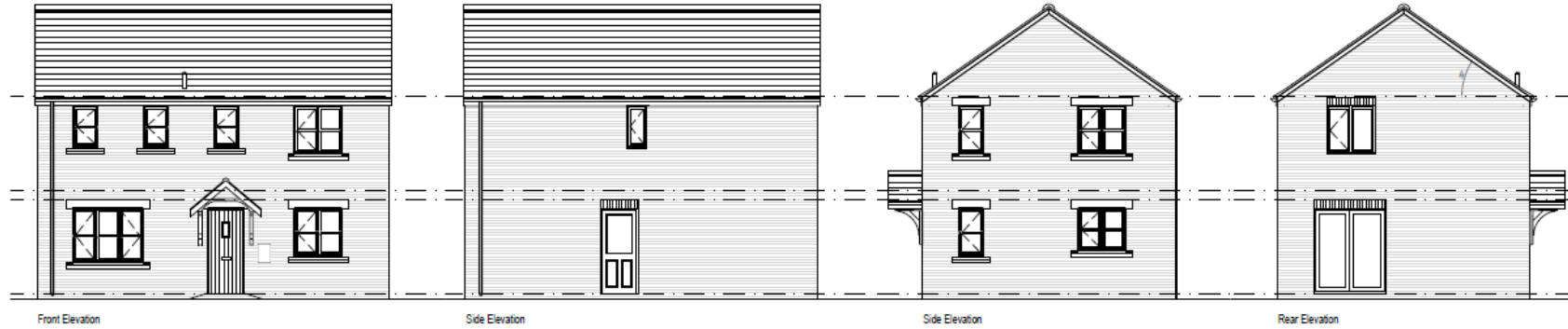


918 sqft	
Chatsworth (Village)	2203/6
CT-WD11	50@A1 100@A3
Plans & Elevations (Planning)	

PLOT 1

Rev G	

# S/35215

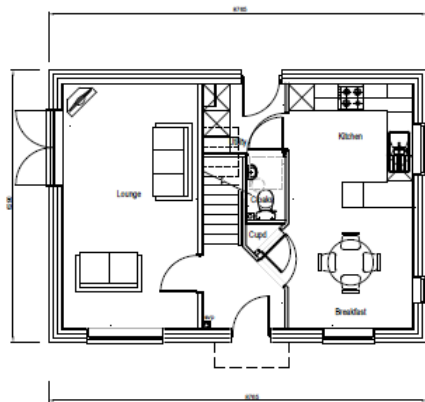


Front Elevation

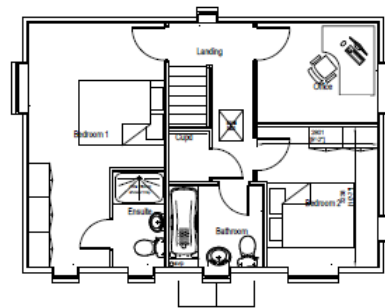
Side Elevation

Side Elevation

Rear Elevation



Ground Floor Plan.



First Floor Plan.

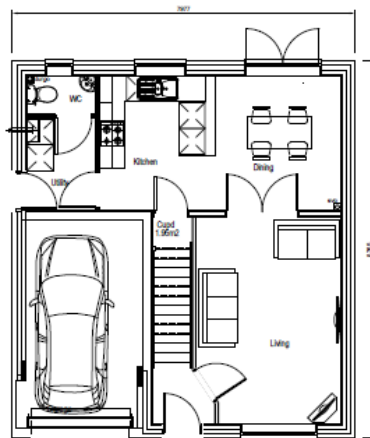
PERSIMMON  
HOMES



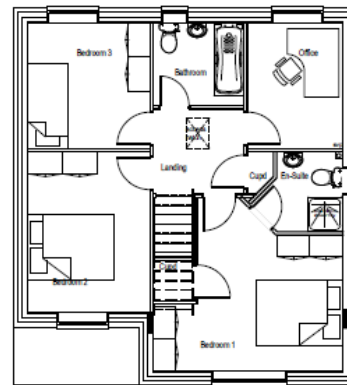
999sqft	
Clayton Corner (Village)	170415
CCA-WD16	50@A1, 100@A3
Plans & Elevations (Planning)	
	Rev 0



# S/35215



Ground Floor Plan



First Floor Plan

PERSIMMON  
HOMES

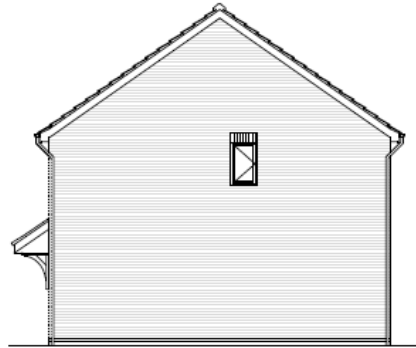


1006sqft	
Roseberry (Village)	100613
RS-WD16	50@A1, 100@A5
Plans & Elevations (Planning)	
	Rev 3

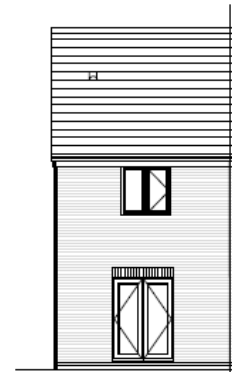
# S/35215



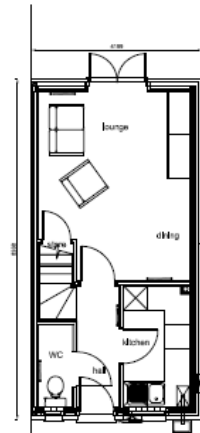
Front Elevation



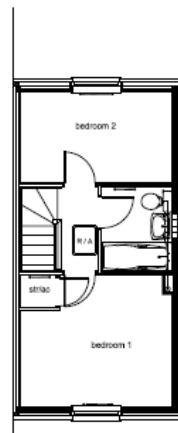
Side Elevation



Rear Elevation



Ground Floor Plan



First Floor Plan

Rev A - Approved Plan on 08/06/2017 10:08 AM  
 Rev B - 02/06/2018 10:08 AM  
 Rev C - 02/06/2018 10:08 AM  
 Rev D - 02/06/2018 10:08 AM  
 Rev E - 02/06/2018 10:08 AM  
 Rev F - 02/06/2018 10:08 AM  
 Rev G - 02/06/2018 10:08 AM  
 Rev H - 02/06/2018 10:08 AM  
 Rev I - 02/06/2018 10:08 AM  
 Rev J - 02/06/2018 10:08 AM  
 Rev K - 02/06/2018 10:08 AM

PERSIMMON  
 HOMES



628 sqft	
628 - WHQS	000112
628-WHQS-WDD1	050A1, 100BA3
Plans & Elevations (Planning)	
	Rev / -



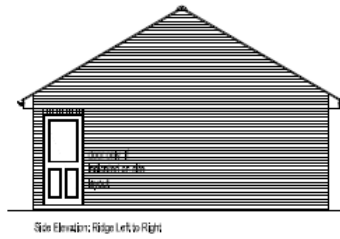
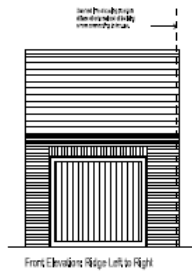
# S/35215



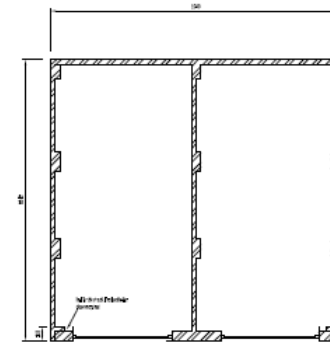
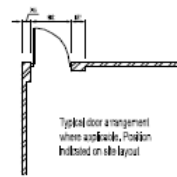
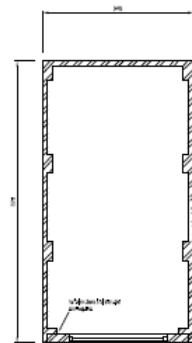
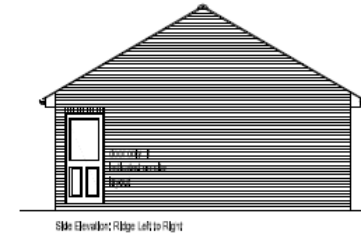
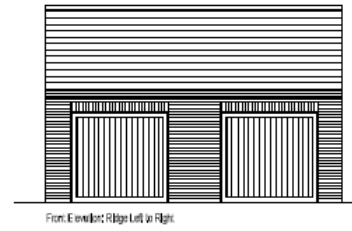
# S/35215

## Garages

### Single



### Double / Single



	
Soth	
Single / Double Garage	Date: 17/01/2014
SGD-01	SGD-01, 1000EA3
Plans and Elevations	

# S/35215





# S/35215



Fallen branch within central PGS to be relocated, made secure & retained as play feature

**SOFT LANDSCAPE KEY:**

- PROPOSED NATIVE TREE PLANTING (Refer to plant schedule for species details)
- PROPOSED ORNAMENTAL TREE PLANTING (Refer to plant schedule for species details)
- PROPOSED PGS HEDGEROW PLANTING (Refer to plant schedule for species details)
- PROPOSED NATIVE HEDGEROW PLANTING (Refer to plant schedule for species details)
- PROPOSED SHRUB PLANTING (Refer to plant schedule for species details)
- PROPOSED NATIVE WOODLAND BUFFER (Refer to plant schedule for species details)
- PROPOSED GRASS SEEDING (Refer to be seeded with: Everington Seeds ESM 1 MG)
- PROPOSED WILDFLOWER SEEDING (Refer to be seeded with: Everington Seeds ESM 1 MG)
- PROPOSED WILDFLOWER WITH LAM SEEDING (Refer to be seeded with: Everington Seeds ESM 1 MG)
- PROPOSED GRASS TURF (Refer to be seeded with: Standard Medialux)
- PROPOSED NATIVE BULB PLANTING (Refer to plant schedule for species details)

**HARD LANDSCAPE KEY:**

- PROPOSED TREER BENCHES (Dimensions: 1000mm x 200mm x 100mm) to be installed in accordance with the manufacturer's specification
- PROPOSED DECK FOOTPATH (Refer to TDA 2336 02)
- PROPOSED BALANCING LOGS (Type to be agreed)
- PROPOSED CLIMBING BOLLERS (Type to be agreed)

**PLANT SCHEDULES**

**NATIVE TREE PLANTING**

Species	Quantity	Planting Date	Planting Location
...	...	...	...

**ORNAMENTAL TREE PLANTING**

Species	Quantity	Planting Date	Planting Location
...	...	...	...

**NATIVE HEDGEROW PLANTING**

Species	Quantity	Planting Date	Planting Location
...	...	...	...

**SHRUB / GRASS PLANTING**

Species	Quantity	Planting Date	Planting Location
...	...	...	...

**BULB PLANTING**

Species	Quantity	Planting Date	Planting Location
...	...	...	...

**KEY TO PLANTING MODULE:**  
TYPICAL 5.0m x 5.0m SQUARE MODULE BASED ON 1.0m GRID

**WOODLAND MIX:**

- 1 nonmodule Acer campestre (Fieldfare) 125-150m) SR
- 1 nonmodule Picea sylvestris (Standard) 200-250m) SR
- 1 nonmodule Quercus robur (Standard) 10-15m) CON
- 1 nonmodule Sorbus aucuparia (Fieldfare) 125-150m) SR
- 15 nonmodule Crataegus monogyna (80-80m) SR (25%)
- Corylus avellana (60-80m) (25%)
- Prunus spinosa (80-80m) SR (25%)
- See appendix 00-000) CON 2-3, (20%)

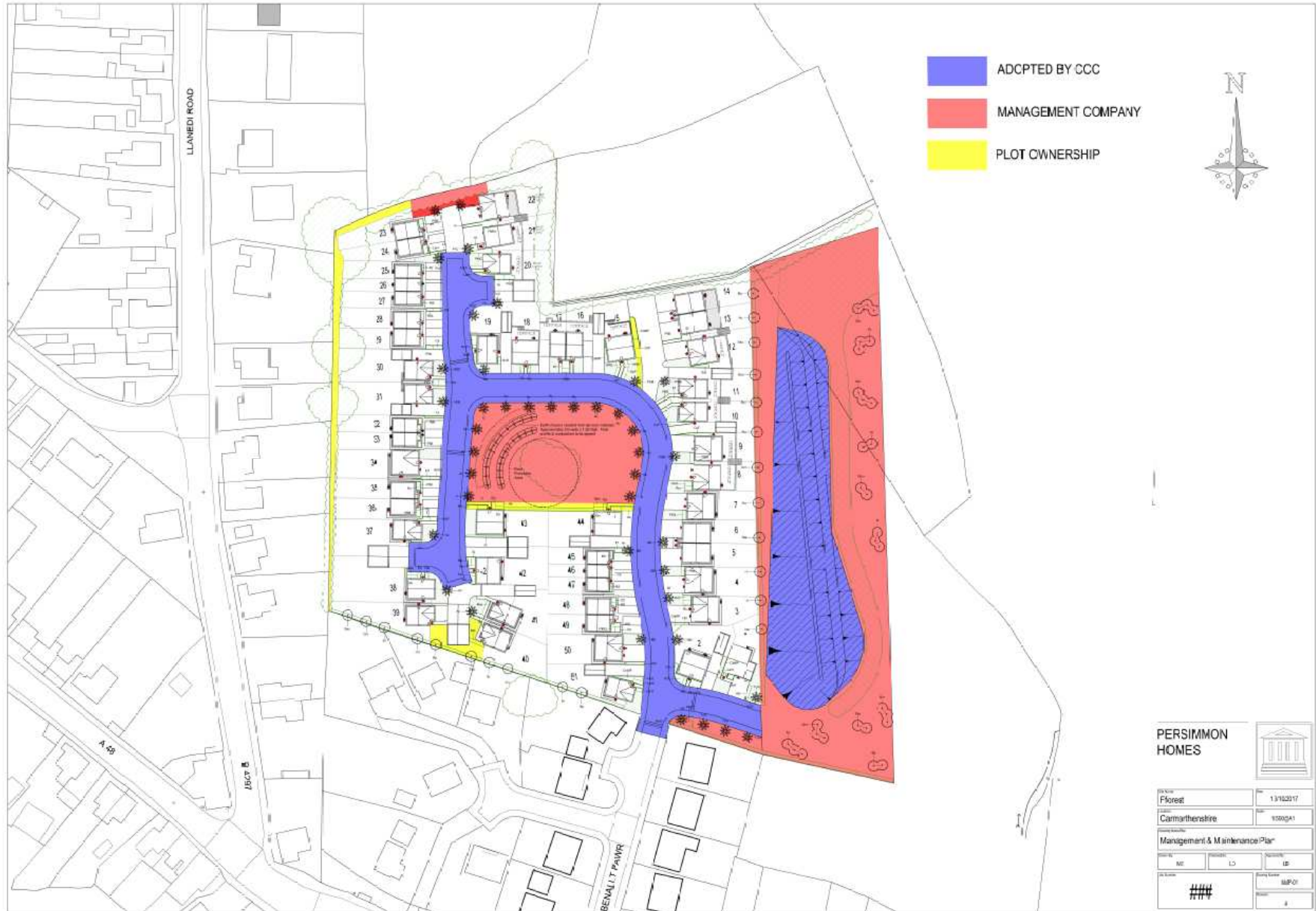
**NOTE:**

Proposed ornamental trees to be set in a collection of 10 trees in a 10m x 10m area. The trees should be planted in a 10m x 10m area. The trees should be planted in a 10m x 10m area. The trees should be planted in a 10m x 10m area.

**PROJECT INFORMATION:**

CLIENT: PERSIMMON HOMES WEST WALES  
 DRAWING NUMBER: TDA 2336 01  
 SCALE: 1:250 @ A0  
 ORIGINATOR: TDC/CAMP  
 DATE: OCT 2017  
 PROJECT: FFOREST  
 DRAWING TITLE: DETAILED SOFT LANDSCAPE PROPOSALS

# S/35215





**S/35215**





**S/35215**



**S/35215**





**S/35215**





**S/35215**



**S/35215**





**S/35215**





**S/35215**



**S/35215**





**S/35215**





**S/35215**





**S/35215**





**S/35215**





**S/35215**



**S/35215**





**S/35215**

